

State of Wyoming Corner Record

(In compliance with the *CORNER PERPETUATION AND FILING ACT*, Wyoming Statutes, 1977, Section 36-11-101, et. seq., and the Rules and Regulations of the Board of Registration for Professional Engineers and Professional Land Surveyors)

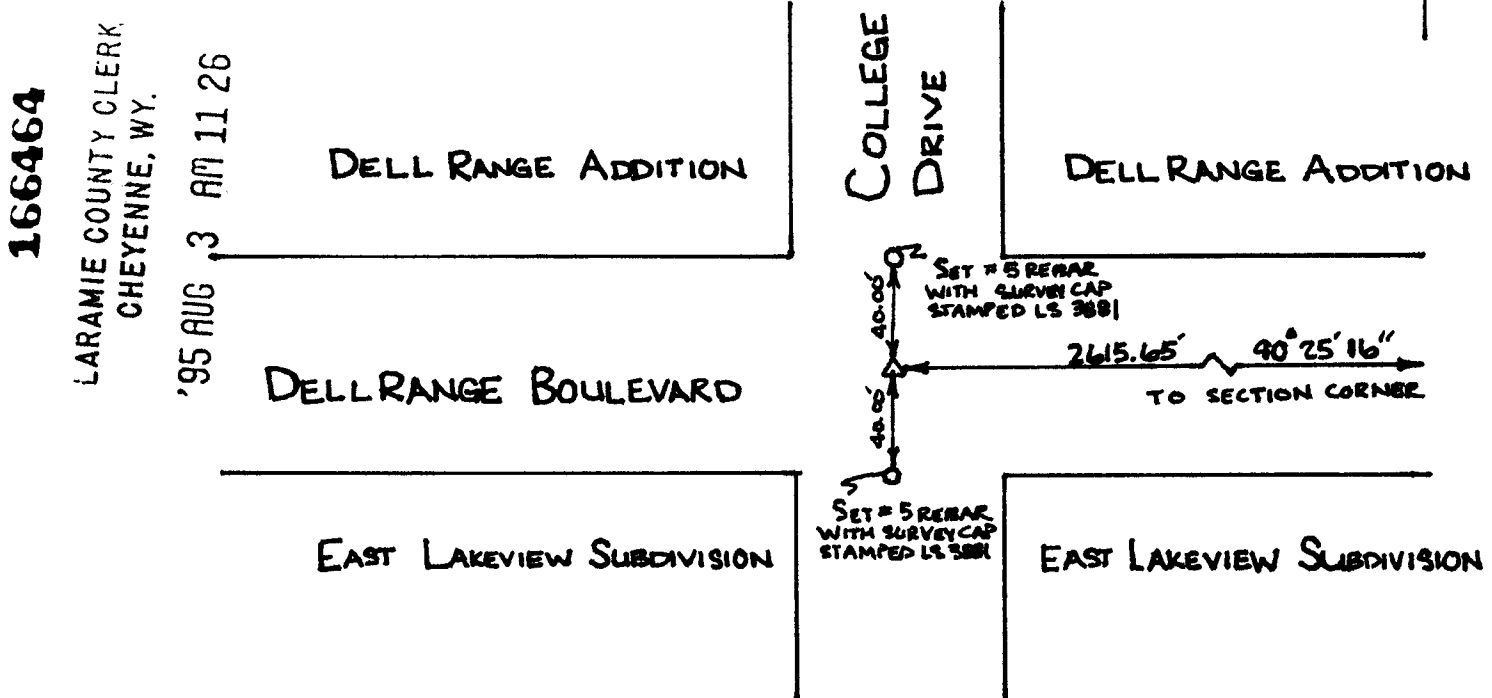
Reverse side of this form may be used if more space is needed.

Record of original survey and citation of source of historical information (if corner is lost or obliterated). Description of corner monumentation evidence found and/or monument and accessories established to perpetuate the location of this corner. Sketch of relative location of monument, accessories, and reference points with course and distance to adjacent corner(s) (if determined in this survey). Method and rationale for reestablishment of lost or obliterated corner.

EVIDENCE FOUND: #5 REBAR (UNCERTAIN OF ORIGIN-
 VERIFIED FROM ADJOINING PLATS AND COUNTY RECORDS)
SET: NOTHING
GLO RECORD: LIMESTONE 16" x 10" x 5"
REFERENCE POINTS SET: 2 #5 REBAR WITH 2" SURVEY CAPS STAMPED LS 3881

NOTES:

1. SEE PLAT OF DELL RANGE BOULEVARD FOR ADDITIONAL INFORMATION
2. BASIS OF AZIMUTHS → CITY OF CHEYENNE CONTROL



166464
 LARAMIE COUNTY CLERK
 CHEYENNE, WY.
 '95 AUG 3 AM 11 26

Date of Field Work: NOVEMBER 18, 1987 Office Reference: 1050

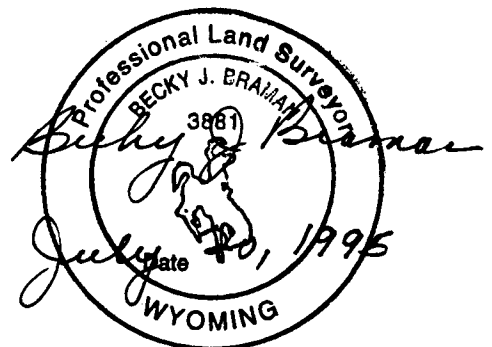
CROSS INDEX DIAGRAM

1	2	3	4	5	6	7	8	9	10	11	12	13	14	15	16	17	18	19	20	21	22	23	24	25	
A																									A
B																									B
C		6		5		4		3		2		1													C
D																									D
E																									E
F																									F
G		7		8		9		10		11		12													G
H																									H
J																									J
K																									K
L		13		17		16		15		14		13													L
M																									M
N																									N
O																									O
P		19		20		21		22		23		24													P
Q																									Q
R																									R
S																									S
T		29		29		28		27		26		25													T
U																									U
V																									V
W																									W
X		31		32		33		34		35		36													X
Y																									Y
Z																									Z

Firm/Agency, Address
 INTERMOUNTAIN PROFESSIONAL SERVICES, INC.
 5801 OSAGE AVENUE
 CHEYENNE WY 82001

Telephone Number: (307) 632-3138

This corner record was prepared by me or under my direction and supervision.
 SEAL & SIGNATURE



Corner Name: 1/4 CORNER 22 Section: T14N R16W; 6 P.M. Cross-Index No.: R-15